

Cable ID	Date / Time	Summary	Length	Test Limit	Media	HEADROOM		
						NEXT	RL	Loss
TEST1	04/17/2009 11:56:18pm	PASS	6 ft	ISO Class Ea Ch AMD1	Copper	19.7 dB	8.1 dB	

**Test Equipment:**

MODEL	VERSION	ADAPTER
DTX-1800	2.1200	DTX-CHA001
DTX-1800R	2.1200	DTX-CHA001

**Copper Summary:**

Length	Propagation Delay	Delay Skew	Resistance	Insertion Loss	NEXT	PS NEXT	ACR-N	PS ACR-N	ACR-F	PS ACR-F	RL
N/A	PASS	PASS	PASS	PASS	N/A	N/A	PASS	PASS	PASS	PASS	N/A

**Wiremap (PASS):**

Expected:	1 2 3 4 5 6 7 8 S
Measured:	1 2 3 4 5 6 7 8 S

**Length (N/A):**

Pair	Value	Limit	Unit	Status
12	7	N/A	ft	N/A
36	7	N/A	ft	N/A
45	6	N/A	ft	N/A
78	7	N/A	ft	N/A

**Propagation Delay (PASS):**

Pair	Value	Limit	Unit	Status
12	9	555	ns	PASS
36	9	555	ns	PASS
45	8	555	ns	PASS
78	9	555	ns	PASS

**Delay Skew (PASS):**

Pair	Value	Limit	Unit	Status
12	1	50	ns	PASS
36	1	50	ns	PASS
45	0	50	ns	PASS
78	1	50	ns	PASS

**Resistance (PASS):**

Pair	Value	Limit	Unit	Status
12	0.9	25.0	ohms	PASS
36	0.7	25.0	ohms	PASS
45	0.8	25.0	ohms	PASS
78	0.9	25.0	ohms	PASS

**Insertion Loss (PASS):**

Pair	Status	Worst Margin				Worst Value			
		Value	Limit	Margin	Frequency	Value	Limit	Margin	Frequency
12	PASS	0.9 dB	45.6 dB	44.7 dB	433.0 MHz	0.9 dB	45.6 dB	44.7 dB	433.0 MHz
36	PASS	0.6 dB	49.3 dB	48.7 dB	500.0 MHz	0.6 dB	49.3 dB	48.7 dB	500.0 MHz
45	PASS	0.7 dB	46.5 dB	45.8 dB	450.0 MHz	0.7 dB	46.5 dB	45.8 dB	450.0 MHz
78	PASS	0.9 dB	45.6 dB	44.7 dB	433.0 MHz	0.9 dB	45.6 dB	44.7 dB	433.0 MHz

**NEXT (N/A):**

Main:

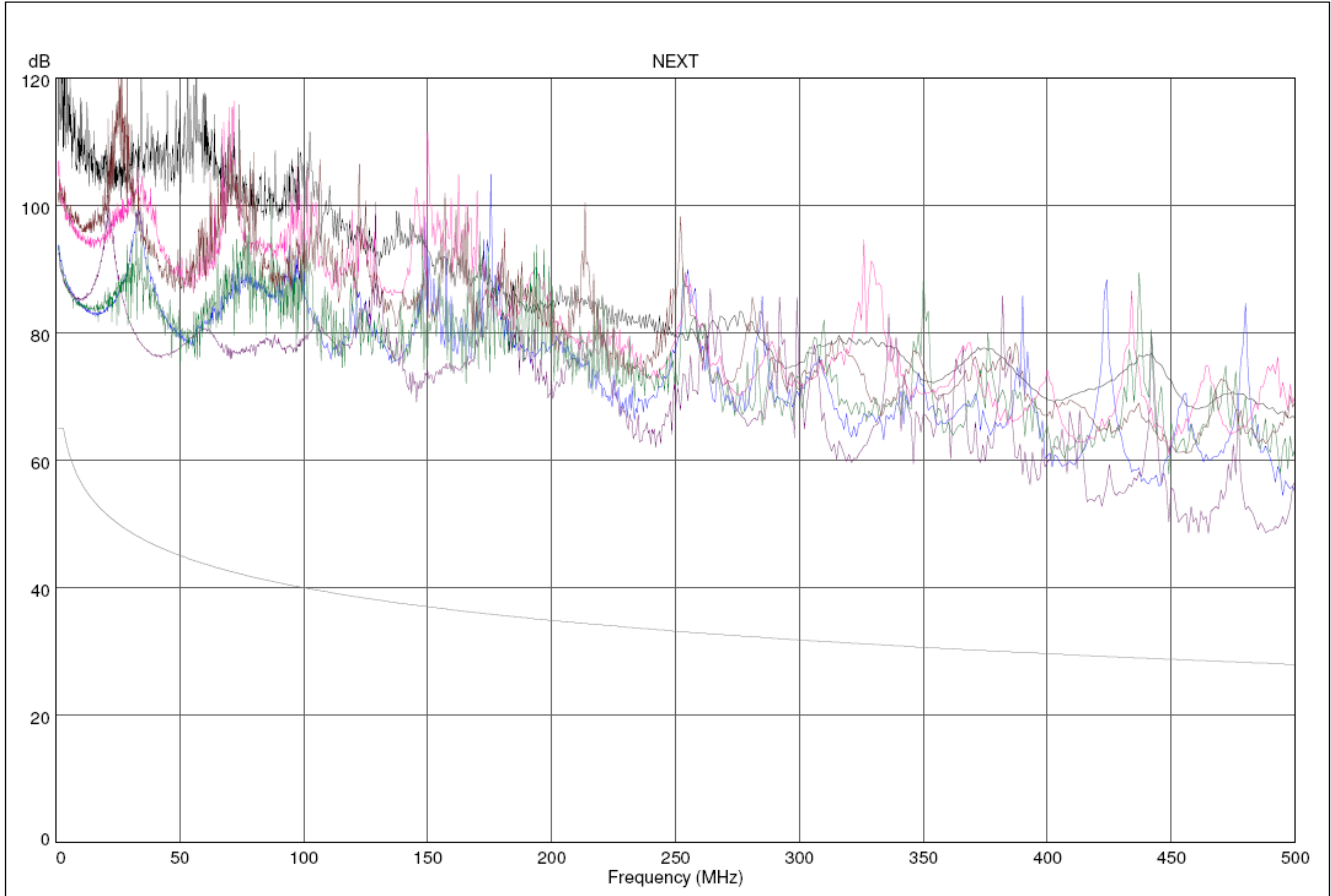
Pair	Status	Worst Margin				Worst Value			
		Value	Limit	Margin	Frequency	Value	Limit	Margin	Frequency
12-36	N/A	89.2 dB	65.0 dB	24.2 dB	3.0 MHz	54.4 dB	28.0 dB	26.4 dB	495.0 MHz
12-45	N/A	61.0 dB	28.7 dB	32.3 dB	449.0 MHz	61.0 dB	28.7 dB	32.3 dB	449.0 MHz
12-78	N/A	66.5 dB	27.9 dB	38.6 dB	500.0 MHz	66.5 dB	27.9 dB	38.6 dB	500.0 MHz
36-45	N/A	48.6 dB	28.6 dB	20.0 dB	457.0 MHz	48.5 dB	28.4 dB	20.1 dB	465.0 MHz
36-78	N/A	88.7 dB	65.0 dB	23.7 dB	3.0 MHz	57.8 dB	28.7 dB	29.1 dB	449.0 MHz
45-78	N/A	61.2 dB	28.7 dB	32.5 dB	452.0 MHz	61.1 dB	28.6 dB	32.5 dB	456.0 MHz

Remote:

Pair	Status	Worst Margin				Worst Value			
		Value	Limit	Margin	Frequency	Value	Limit	Margin	Frequency
12-36	N/A	89.7 dB	65.0 dB	24.7 dB	3.0 MHz	53.5 dB	28.0 dB	25.5 dB	494.0 MHz
12-45	N/A	97.3 dB	63.3 dB	34.0 dB	3.9 MHz	63.3 dB	27.9 dB	35.4 dB	496.0 MHz
12-78	N/A	65.0 dB	27.9 dB	37.1 dB	498.0 MHz	65.0 dB	27.9 dB	37.1 dB	498.0 MHz
36-45	N/A	48.3 dB	28.6 dB	19.7 dB	458.0 MHz	48.3 dB	28.6 dB	19.7 dB	458.0 MHz
36-78	N/A	88.7 dB	64.8 dB	23.9 dB	3.1 MHz	57.0 dB	27.9 dB	29.1 dB	497.0 MHz
45-78	N/A	60.4 dB	28.6 dB	31.8 dB	455.0 MHz	60.4 dB	28.6 dB	31.8 dB	455.0 MHz

TEST1

04/17/2009 11:56:18pm



**PS NEXT (N/A):**

Main:

Pair	Status	Worst Margin				Worst Value			
		Value	Limit	Margin	Frequency	Value	Limit	Margin	Frequency
12	N/A	88.8 dB	62.0 dB	26.8 dB	3.3 MHz	54.1 dB	24.9 dB	29.2 dB	495.0 MHz
36	N/A	83.6 dB	62.0 dB	21.6 dB	3.3 MHz	48.1 dB	25.4 dB	22.7 dB	465.0 MHz
45	N/A	48.3 dB	25.5 dB	22.8 dB	457.0 MHz	48.3 dB	25.5 dB	22.8 dB	457.0 MHz
78	N/A	88.2 dB	62.0 dB	26.2 dB	3.3 MHz	56.1 dB	25.7 dB	30.4 dB	449.0 MHz

Remote:

Pair	Status	Worst Margin				Worst Value			
		Value	Limit	Margin	Frequency	Value	Limit	Margin	Frequency
12	N/A	89.0 dB	62.0 dB	27.0 dB	3.3 MHz	53.0 dB	24.9 dB	28.1 dB	494.0 MHz
36	N/A	84.4 dB	62.0 dB	22.4 dB	3.1 MHz	48.1 dB	25.5 dB	22.6 dB	458.0 MHz
45	N/A	48.1 dB	25.5 dB	22.6 dB	458.0 MHz	48.1 dB	25.5 dB	22.6 dB	458.0 MHz
78	N/A	88.4 dB	62.0 dB	26.4 dB	3.1 MHz	55.8 dB	24.9 dB	30.9 dB	497.0 MHz

**ACR-N (PASS):**

Main:

Pair	Status	Worst Margin				Worst Value			
		Value	Limit	Margin	Frequency	Value	Limit	Margin	Frequency
12-36	PASS	88.9 dB	61.0 dB	27.9 dB	3.0 MHz	53.8 dB	-21.1 dB	74.9 dB	495.0 MHz
12-45	PASS	97.5 dB	59.5 dB	38.0 dB	3.8 MHz	60.3 dB	-17.8 dB	78.1 dB	449.0 MHz
12-78	PASS	108.2 dB	61.0 dB	47.2 dB	2.9 MHz	65.8 dB	-21.4 dB	87.2 dB	500.0 MHz
36-45	PASS	87.9 dB	61.0 dB	26.9 dB	3.0 MHz	47.9 dB	-19.0 dB	66.9 dB	465.0 MHz
36-78	PASS	88.4 dB	61.0 dB	27.4 dB	3.0 MHz	57.1 dB	-17.8 dB	74.9 dB	449.0 MHz
45-78	PASS	99.7 dB	61.0 dB	38.7 dB	2.1 MHz	60.4 dB	-18.3 dB	78.7 dB	456.0 MHz

Remote:

Pair	Status	Worst Margin				Worst Value			
		Value	Limit	Margin	Frequency	Value	Limit	Margin	Frequency
12-36	PASS	89.4 dB	61.0 dB	28.4 dB	3.0 MHz	53.0 dB	-21.0 dB	74.0 dB	494.0 MHz
12-45	PASS	97.1 dB	59.2 dB	37.9 dB	3.9 MHz	62.8 dB	-21.1 dB	83.9 dB	496.0 MHz
12-78	PASS	110.0 dB	61.0 dB	49.0 dB	1.8 MHz	64.3 dB	-21.3 dB	85.6 dB	498.0 MHz
36-45	PASS	88.6 dB	61.0 dB	27.6 dB	3.0 MHz	47.7 dB	-18.4 dB	66.1 dB	458.0 MHz
36-78	PASS	88.4 dB	60.8 dB	27.6 dB	3.1 MHz	56.3 dB	-21.2 dB	77.5 dB	497.0 MHz
45-78	PASS	99.5 dB	61.0 dB	38.5 dB	2.6 MHz	59.7 dB	-18.2 dB	77.9 dB	455.0 MHz

**PS ACR-N (PASS):**

Main:

Pair	Status	Worst Margin				Worst Value			
		Value	Limit	Margin	Frequency	Value	Limit	Margin	Frequency
12	PASS	88.5 dB	58.0 dB	30.5 dB	3.3 MHz	53.4 dB	-24.1 dB	77.5 dB	495.0 MHz
36	PASS	83.3 dB	58.0 dB	25.3 dB	3.3 MHz	47.7 dB	-22.0 dB	69.7 dB	465.0 MHz
45	PASS	87.1 dB	58.0 dB	29.1 dB	3.3 MHz	47.7 dB	-21.4 dB	69.1 dB	457.0 MHz
78	PASS	87.9 dB	58.0 dB	29.9 dB	3.3 MHz	55.4 dB	-20.8 dB	76.2 dB	449.0 MHz

Remote:

Pair	Status	Worst Margin				Worst Value			
		Value	Limit	Margin	Frequency	Value	Limit	Margin	Frequency
12	PASS	88.7 dB	58.0 dB	30.7 dB	3.3 MHz	52.3 dB	-24.1 dB	76.4 dB	494.0 MHz
36	PASS	84.1 dB	58.0 dB	26.1 dB	3.1 MHz	47.6 dB	-21.5 dB	69.1 dB	458.0 MHz
45	PASS	87.4 dB	57.7 dB	29.7 dB	3.4 MHz	47.5 dB	-21.5 dB	69.0 dB	458.0 MHz
78	PASS	88.1 dB	58.0 dB	30.1 dB	3.1 MHz	55.1 dB	-24.3 dB	79.4 dB	497.0 MHz

**ACR-F (PASS):**

Main:

Pair	Status	Worst Margin				Worst Value			
		Value	Limit	Margin	Frequency	Value	Limit	Margin	Frequency
12-36	PASS	47.3 dB	18.8 dB	28.5 dB	167.0 MHz	38.5 dB	10.0 dB	28.5 dB	459.0 MHz
12-45	PASS	38.0 dB	9.3 dB	28.7 dB	500.0 MHz	38.0 dB	9.3 dB	28.7 dB	500.0 MHz
12-78	PASS	57.6 dB	9.3 dB	48.3 dB	500.0 MHz	57.6 dB	9.3 dB	48.3 dB	500.0 MHz
36-12	PASS	38.0 dB	10.6 dB	27.4 dB	431.0 MHz	37.6 dB	9.5 dB	28.1 dB	485.0 MHz
36-45	PASS	31.4 dB	9.9 dB	21.5 dB	468.0 MHz	31.4 dB	9.9 dB	21.5 dB	468.0 MHz
36-78	PASS	32.5 dB	9.3 dB	23.2 dB	499.0 MHz	32.5 dB	9.3 dB	23.2 dB	499.0 MHz
45-12	PASS	39.1 dB	9.3 dB	29.8 dB	499.0 MHz	39.1 dB	9.3 dB	29.8 dB	499.0 MHz
45-36	PASS	33.6 dB	10.9 dB	22.7 dB	417.0 MHz	32.9 dB	9.9 dB	23.0 dB	466.0 MHz
45-78	PASS	48.3 dB	9.4 dB	38.9 dB	494.0 MHz	48.2 dB	9.3 dB	38.9 dB	496.0 MHz
78-12	PASS	58.1 dB	9.3 dB	48.8 dB	500.0 MHz	58.1 dB	9.3 dB	48.8 dB	500.0 MHz
78-36	PASS	31.5 dB	9.3 dB	22.2 dB	500.0 MHz	31.5 dB	9.3 dB	22.2 dB	500.0 MHz
78-45	PASS	46.6 dB	9.4 dB	37.2 dB	495.0 MHz	46.6 dB	9.4 dB	37.2 dB	495.0 MHz

Remote:

Pair	Status	Worst Margin				Worst Value			
		Value	Limit	Margin	Frequency	Value	Limit	Margin	Frequency
12-36	PASS	40.6 dB	12.9 dB	27.7 dB	331.0 MHz	38.1 dB	9.5 dB	28.6 dB	485.0 MHz
12-45	PASS	39.3 dB	9.3 dB	30.0 dB	499.0 MHz	39.3 dB	9.3 dB	30.0 dB	499.0 MHz
12-78	PASS	58.1 dB	9.3 dB	48.8 dB	500.0 MHz	58.1 dB	9.3 dB	48.8 dB	500.0 MHz
36-12	PASS	38.3 dB	10.0 dB	28.3 dB	459.0 MHz	38.3 dB	10.0 dB	28.3 dB	459.0 MHz
36-45	PASS	33.3 dB	10.9 dB	22.4 dB	417.0 MHz	32.6 dB	9.9 dB	22.7 dB	468.0 MHz
36-78	PASS	31.4 dB	9.3 dB	22.1 dB	500.0 MHz	31.4 dB	9.3 dB	22.1 dB	500.0 MHz
45-12	PASS	37.8 dB	9.3 dB	28.5 dB	500.0 MHz	37.8 dB	9.3 dB	28.5 dB	500.0 MHz
45-36	PASS	31.7 dB	9.9 dB	21.8 dB	466.0 MHz	31.7 dB	9.9 dB	21.8 dB	466.0 MHz
45-78	PASS	46.4 dB	9.4 dB	37.0 dB	495.0 MHz	46.4 dB	9.4 dB	37.0 dB	495.0 MHz
78-12	PASS	57.6 dB	9.3 dB	48.3 dB	500.0 MHz	57.6 dB	9.3 dB	48.3 dB	500.0 MHz
78-36	PASS	32.6 dB	9.3 dB	23.3 dB	499.0 MHz	32.6 dB	9.3 dB	23.3 dB	499.0 MHz
78-45	PASS	48.5 dB	9.4 dB	39.1 dB	494.0 MHz	48.4 dB	9.3 dB	39.1 dB	496.0 MHz

**PS ACR-F (PASS):**

Main:

Pair	Status	Worst Margin				Worst Value			
		Value	Limit	Margin	Frequency	Value	Limit	Margin	Frequency
12	PASS	38.8 dB	9.9 dB	28.9 dB	331.0 MHz	35.9 dB	6.5 dB	29.4 dB	489.0 MHz
36	PASS	29.8 dB	6.9 dB	22.9 dB	466.0 MHz	29.8 dB	6.9 dB	22.9 dB	466.0 MHz
45	PASS	31.3 dB	6.9 dB	24.4 dB	468.0 MHz	31.3 dB	6.9 dB	24.4 dB	468.0 MHz
78	PASS	32.4 dB	6.3 dB	26.1 dB	499.0 MHz	32.4 dB	6.3 dB	26.1 dB	499.0 MHz

Remote:

Pair	Status	Worst Margin				Worst Value			
		Value	Limit	Margin	Frequency	Value	Limit	Margin	Frequency
12	PASS	36.4 dB	7.3 dB	29.1 dB	447.0 MHz	35.5 dB	6.3 dB	29.2 dB	500.0 MHz
36	PASS	29.2 dB	6.9 dB	22.3 dB	466.0 MHz	29.1 dB	6.8 dB	22.3 dB	469.0 MHz
45	PASS	33.5 dB	7.9 dB	25.6 dB	417.0 MHz	32.8 dB	6.9 dB	25.9 dB	466.0 MHz
78	PASS	31.4 dB	6.3 dB	25.1 dB	500.0 MHz	31.4 dB	6.3 dB	25.1 dB	500.0 MHz

**RL (N/A):**

Main:

Pair	Status	Worst Margin				Worst Value			
		Value	Limit	Margin	Frequency	Value	Limit	Margin	Frequency
12	N/A	29.3 dB	19.0 dB	10.3 dB	9.4 MHz	20.5 dB	6.9 dB	13.6 dB	324.0 MHz
36	N/A	29.2 dB	19.0 dB	10.2 dB	10.0 MHz	20.2 dB	6.0 dB	14.2 dB	489.0 MHz
45	N/A	28.8 dB	19.0 dB	9.8 dB	1.0 MHz	17.7 dB	6.0 dB	11.7 dB	478.0 MHz
78	N/A	29.4 dB	19.0 dB	10.4 dB	7.9 MHz	21.9 dB	6.0 dB	15.9 dB	435.0 MHz

Remote:

Pair	Status	Worst Margin				Worst Value			
		Value	Limit	Margin	Frequency	Value	Limit	Margin	Frequency
12	N/A	27.7 dB	19.0 dB	8.7 dB	1.0 MHz	18.3 dB	6.0 dB	12.3 dB	456.0 MHz
36	N/A	27.1 dB	19.0 dB	8.1 dB	1.0 MHz	23.1 dB	6.0 dB	17.1 dB	489.0 MHz
45	N/A	27.6 dB	19.0 dB	8.6 dB	1.0 MHz	19.0 dB	6.0 dB	13.0 dB	418.0 MHz
78	N/A	28.3 dB	19.0 dB	9.3 dB	1.0 MHz	20.7 dB	6.0 dB	14.7 dB	494.0 MHz

TEST1

04/17/2009 11:56:18pm

